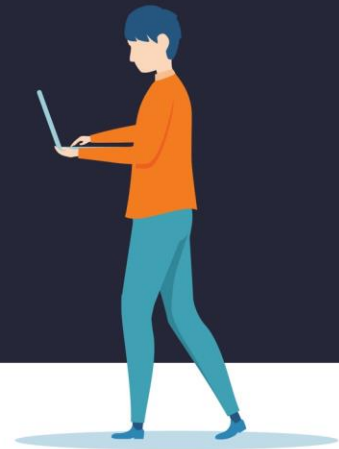




# Connecting DHBs to the Data Exchange

June 2021



## DHBs connected to the Data Exchange

Canterbury | Capital and Coast

Hutt Valley | Mid-Central

Nelson Marlborough | Waikato

Waitematā

### Mid-Central DHB

Mid-Central DHB initially connected with the Data Exchange alongside five other organisations as part of the Collective Impact initiative Kāinga Whānau Ora in Palmerston North.

Mid-Central were impressed at the safety, security and ease by which they could transfer data and soon set up a second data sharing connection with Think Hauora, a PHO also involved in Kāinga Whānau Ora.

This meant that when the Ministry of Health needed quick, safe and secure data about ICU bed availability in response to COVID-19, Mid-Central DHB was ready to go.

## Case Study: Critical information shared during COVID-19 response

As the government's response to COVID-19 ramped up in March 2020, the Ministry of Health needed timely information about Intensive Care Unit bed availability.

The Social Wellbeing Agency worked with four DHBs to set up the required information sharing agreements with the Ministry. Waitematā, Mid-Central, Capital and Coast, and Canterbury DHBs acted as hubs for other DHBs. This ensured the Ministry received hourly data on ICU bed availability from nine DHBs, covering over half the country.

This Data Exchange network saw the first transfer of data occurring in a matter of days. The Ministry of Health, with near-real time data tracking intensive care resources, could quickly analyse quality data from DHBs to support the government's pandemic response. This information was critical, as it could be used to support strengthening or relaxing restrictions based on ICU capacity.

## A 'smart pipe' for safe, secure transfer of data

The Data Exchange is, in effect, a smart pipe that facilitates safe, efficient and controlled transfer of data. Using the Data Exchange means the social sector can make evidence-based decisions sooner, improving service delivery and enhancing people's lives.

### Data Exchange benefits

- Safe and secure transfer of data
- Easy, efficient and consistent data connection and transfer
- Standard approaches to privacy, data management and data standards

### How it works

Unlike a database, the Data Exchange doesn't store any data. It's a hybrid client and cloud-based solution that makes it easier for data to travel securely between organisations. Simply connect, map and exchange.

**Connect** – The Data Exchange works with all major data storage systems and APIS. It takes as little as 20 minutes for an organisation to connect and begin exchanging data.

**Map** – The Data Exchange has algorithms that map data sources and destinations. Users merely guide the process.

**Exchange** – Once authorised, data from the source system is encrypted and transferred to the destination system. This allows information to move between systems without requiring manual effort to build interfaces.

## Security and privacy

The DX meets government information security standards set out in the NZISM for information classified as **sensitive** or **restricted**.

Users follow a carefully designed set of security and privacy principles, guided by the Social Wellbeing Agency's Data Exchange team.

### FAQs

**Does the Exchange retain data?** – Only sending and receiving organisations access data. No other parties can see, retain or access any data content at any time.

**Is it only for agencies?** – The Data Exchange enables data transfers between organisations of any kind, including NGOs and government agencies.

**Is a high standard of technical capability required to use it?** – Only modest technical capability is needed to operate it, making it suitable for use by large and small organisations.

**Does SWA own the Data Exchange?** – Wellington-based Kiwi company Eight Wire Limited owns and operates the Data Exchange.